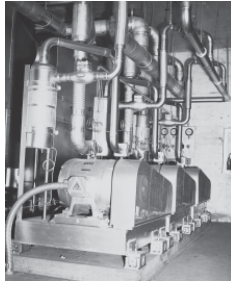


HOSPITALS, MEDICAL FACILITIES AND MEDICAL OFFICE BUILDINGS



FRANK M. BOOTH, INC. VALLEY SHEET METAL CO. FRANK M. BOOTH - DESIGN BUILD CO.
WWW.FRANKBOOTH.COM



HOSPITALS, MEDICAL FACILITIES AND MEDICAL OFFICE BUILDINGS

Capacity restraints, seismic regulations and technology demands impose constant pressures on medical facilities. Owners are confronted with quickly releasing new projects while being compelled to keep a sharp eye on development costs and return on investment needs.

Healthcare facilities represent perhaps the most unique challenge to the construction industry. Frank M. Booth, Inc. has the experience, the focus and the organizational breadth to design and construct your mechanical systems and provide the timely and accurate solutions you demand. Our highly regarded engineers will design an efficient, reliable, flexible and cost effective system that will satisfy your most exacting requirements.

Frank M. Booth, Inc. has been installing mechanical systems in medical facilities since the 1950's and we have been performing design build and design assist work for the medical industry for over 20 years.

Let us show you how —

OUR PERFORMANCE BUILDS RELATIONSHIPS®



HOSPITAL AND MOB MECHANICAL SYSTEMS

Our experience and success ensures —

- i] effective coordination w/OSHPD, inspectors and other regulators;*
- ii] a constructible design, eliminating schematics, producing a one-step process;*
- iii] pre-engineered seismic details avoiding deferred approvals;*
- iv] a knowledgeable eye on cost and constructibility;*
- v] certified med gas installers and NEBB certified commissioning and balancing;*
- vi] systems fabricated off site, minimizing disruption, maximizing quality and satisfying rigorous schedules.*



Opposite page: FMB's first major hospital project, Redding Hospital in 1953. Sutter Roseville Hospital. This page (top to bottom, l to r): St. Mary's Hospital and MOB, Novato; Kaiser Geary MOB, San Francisco; UCD Ambulatory Center, Davis; Sutter Roseville Ambulatory, Roseville.





Coalinga Secure Treatment Facility

RECENT MEDICAL OFFICE BUILDINGS/HOSPITALS

- Sutter Memorial Medical Center, Modesto*
- Sutter Roseville Hospital Bed Tower, Roseville*
- Fremont-Rideout Hospital, Marysville*
- Kaiser 1680 MOB, Roseville*
- Sutter Roseville Emergency Department, Roseville*
- Sutter North Ambulatory Care Center, Yuba City*
- UCD Genome & Biomedical Sciences Facility, Davis*
- UCD Oak Park Research Building, Sacramento*
- Coalinga Secure Treatment Facility, Coalinga*
- Sutter Delta Women's Health Center, Antioch*
- Sutter Roseville Ambulatory Care Center, Roseville*
- Sutter Roseville ICU, Roseville*
- Sutter North MOB, Yuba City*
- Sacramento County Primary Care Clinic, Sacramento*
- Sonoma Developmental Center, Sonoma*
- Porterville Developmental Center, Porterville*
- Sutter Lakeside Hospital, Lakeport*

www.frankbooth.com

